



HAWK ESTIMATES

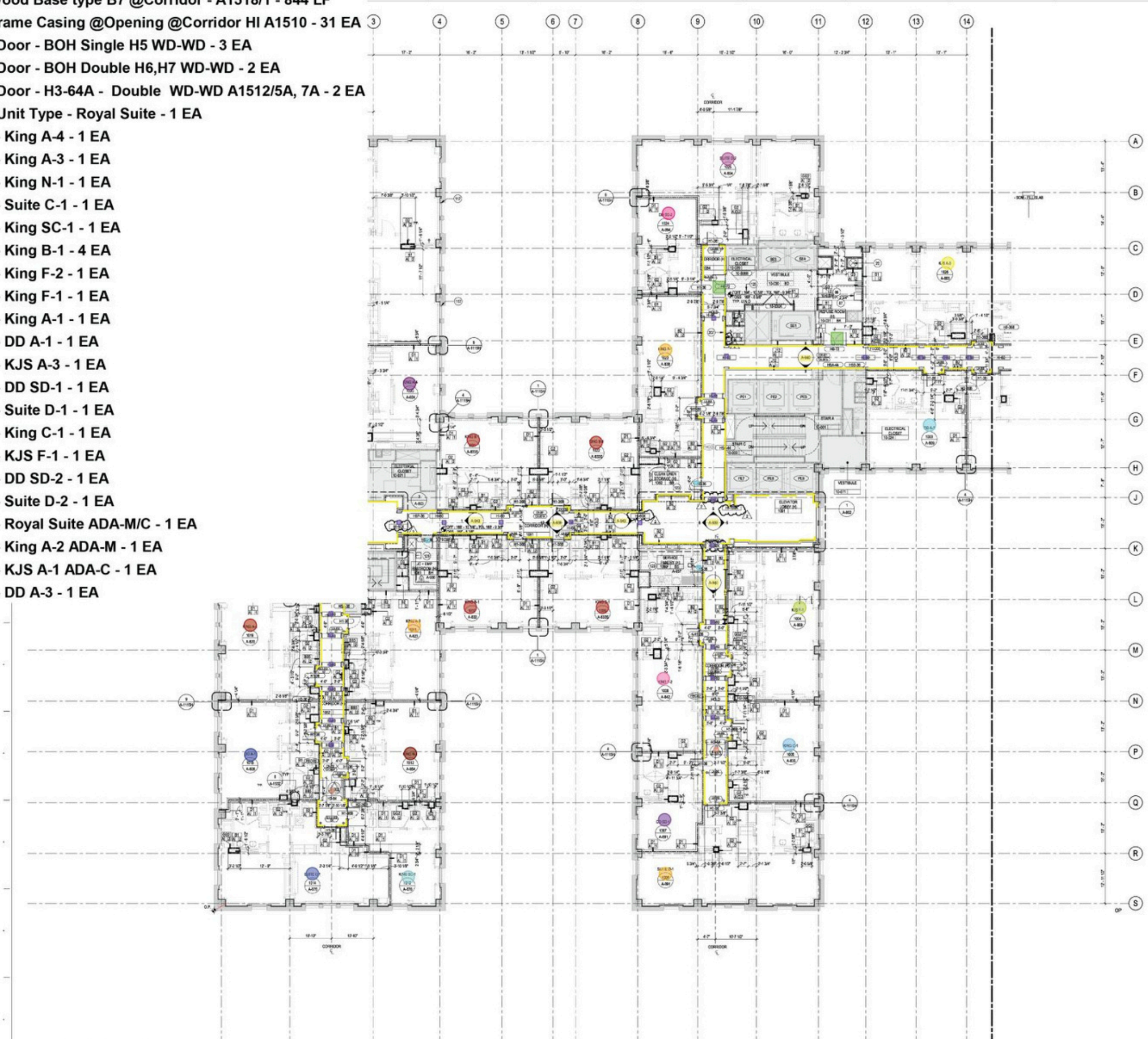
**THE
WALDORF ASTORIA
RENOVATIONS ESTIMATE**

By Hawk Estimation Services



- 1 - Wood Base type B7 @Corridor - A1518/1 - 844 LF
- 3 - Frame Casing @Opening @Corridor HI A1510 - 31 EA
- 19 - Door - BOH Single H5 WD-WD - 3 EA
- 20 - Door - BOH Double H6,H7 WD-WD - 2 EA
- 21 - Door - H3-64A - Double WD-WD A1512/5A, 7A - 2 EA
- 38 - Unit Type - Royal Suite - 1 EA
- 147 - King A-4 - 1 EA
- 149 - King A-3 - 1 EA
- 151 - King N-1 - 1 EA
- 152 - Suite C-1 - 1 EA
- 153 - King SC-1 - 1 EA
- 155 - King B-1 - 4 EA
- 156 - King F-2 - 1 EA
- 158 - King F-1 - 1 EA
- 161 - King A-1 - 1 EA
- 182 - DD A-1 - 1 EA
- 188 - KJS A-3 - 1 EA
- 197 - DD SD-1 - 1 EA
- 198 - Suite D-1 - 1 EA
- 203 - King C-1 - 1 EA
- 204 - KJS F-1 - 1 EA
- 206 - DD SD-2 - 1 EA
- 207 - Suite D-2 - 1 EA
- 220 - Royal Suite ADA-M/C - 1 EA
- 221 - King A-2 ADA-M - 1 EA
- 222 - KJS A-1 ADA-C - 1 EA
- 223 - DD A-3 - 1 EA

1 LEVEL 10 - PART PLAN A - H
SCALE: 1/8" = 1'-0"



GENERAL NOTES

1. ALL ELEVATIONS IN FEET REFERENCED TO NORTH AMERICAN VERTICAL DATUM OF 1985 UNLESS NOTED OTHERWISE.
2. REFER TO SUBMITTALS FOR ALL TYPES OF DOCUMENTATION. GENERAL NOTES FOR DOOR SCHEDULE, CASED OPENING SCHEDULE, ROOM FINISH SCHEDULE, WINDOW SCHEDULE, MECHANICAL SCHEDULE AND ACQUISITION SCHEDULE.
3. REFER TO SUBMITTALS FOR ALL TYPES OF DOCUMENTATION. GENERAL NOTES FOR DOOR SCHEDULE, CASED OPENING SCHEDULE, ROOM FINISH SCHEDULE, WINDOW SCHEDULE, MECHANICAL SCHEDULE AND ACQUISITION SCHEDULE.
4. REFER TO SUBMITTALS FOR ALL TYPES OF DOCUMENTATION. GENERAL NOTES FOR DOOR SCHEDULE, CASED OPENING SCHEDULE, ROOM FINISH SCHEDULE, WINDOW SCHEDULE, MECHANICAL SCHEDULE AND ACQUISITION SCHEDULE.
5. REFER TO SUBMITTALS FOR ALL TYPES OF DOCUMENTATION. GENERAL NOTES FOR DOOR SCHEDULE, CASED OPENING SCHEDULE, ROOM FINISH SCHEDULE, WINDOW SCHEDULE, MECHANICAL SCHEDULE AND ACQUISITION SCHEDULE.
6. REFER TO SUBMITTALS FOR ALL TYPES OF DOCUMENTATION. GENERAL NOTES FOR DOOR SCHEDULE, CASED OPENING SCHEDULE, ROOM FINISH SCHEDULE, WINDOW SCHEDULE, MECHANICAL SCHEDULE AND ACQUISITION SCHEDULE.
7. DRAWING NUMBER CALCULATED AS: DRAWING NUMBER = PROJECT NUMBER - DRAWING NUMBER. REFER TO DRAWING NUMBER FOR PROJECT NUMBER.
8. REFER TO SUBMITTALS FOR ALL TYPES OF DOCUMENTATION. GENERAL NOTES FOR DOOR SCHEDULE, CASED OPENING SCHEDULE, ROOM FINISH SCHEDULE, WINDOW SCHEDULE, MECHANICAL SCHEDULE AND ACQUISITION SCHEDULE.
9. REFER TO SUBMITTALS FOR ALL TYPES OF DOCUMENTATION. GENERAL NOTES FOR DOOR SCHEDULE, CASED OPENING SCHEDULE, ROOM FINISH SCHEDULE, WINDOW SCHEDULE, MECHANICAL SCHEDULE AND ACQUISITION SCHEDULE.
10. REFER TO SUBMITTALS FOR ALL TYPES OF DOCUMENTATION. GENERAL NOTES FOR DOOR SCHEDULE, CASED OPENING SCHEDULE, ROOM FINISH SCHEDULE, WINDOW SCHEDULE, MECHANICAL SCHEDULE AND ACQUISITION SCHEDULE.
11. REFER TO SUBMITTALS FOR ALL TYPES OF DOCUMENTATION. GENERAL NOTES FOR DOOR SCHEDULE, CASED OPENING SCHEDULE, ROOM FINISH SCHEDULE, WINDOW SCHEDULE, MECHANICAL SCHEDULE AND ACQUISITION SCHEDULE.
12. REFER TO SUBMITTALS FOR ALL TYPES OF DOCUMENTATION. GENERAL NOTES FOR DOOR SCHEDULE, CASED OPENING SCHEDULE, ROOM FINISH SCHEDULE, WINDOW SCHEDULE, MECHANICAL SCHEDULE AND ACQUISITION SCHEDULE.
13. REFER TO SUBMITTALS FOR ALL TYPES OF DOCUMENTATION. GENERAL NOTES FOR DOOR SCHEDULE, CASED OPENING SCHEDULE, ROOM FINISH SCHEDULE, WINDOW SCHEDULE, MECHANICAL SCHEDULE AND ACQUISITION SCHEDULE.
14. REFER TO SUBMITTALS FOR ALL TYPES OF DOCUMENTATION. GENERAL NOTES FOR DOOR SCHEDULE, CASED OPENING SCHEDULE, ROOM FINISH SCHEDULE, WINDOW SCHEDULE, MECHANICAL SCHEDULE AND ACQUISITION SCHEDULE.
15. REFER TO SUBMITTALS FOR ALL TYPES OF DOCUMENTATION. GENERAL NOTES FOR DOOR SCHEDULE, CASED OPENING SCHEDULE, ROOM FINISH SCHEDULE, WINDOW SCHEDULE, MECHANICAL SCHEDULE AND ACQUISITION SCHEDULE.
16. REFER TO SUBMITTALS FOR ALL TYPES OF DOCUMENTATION. GENERAL NOTES FOR DOOR SCHEDULE, CASED OPENING SCHEDULE, ROOM FINISH SCHEDULE, WINDOW SCHEDULE, MECHANICAL SCHEDULE AND ACQUISITION SCHEDULE.
17. REFER TO SUBMITTALS FOR ALL TYPES OF DOCUMENTATION. GENERAL NOTES FOR DOOR SCHEDULE, CASED OPENING SCHEDULE, ROOM FINISH SCHEDULE, WINDOW SCHEDULE, MECHANICAL SCHEDULE AND ACQUISITION SCHEDULE.
18. REFER TO SUBMITTALS FOR ALL TYPES OF DOCUMENTATION. GENERAL NOTES FOR DOOR SCHEDULE, CASED OPENING SCHEDULE, ROOM FINISH SCHEDULE, WINDOW SCHEDULE, MECHANICAL SCHEDULE AND ACQUISITION SCHEDULE.
19. REFER TO SUBMITTALS FOR ALL TYPES OF DOCUMENTATION. GENERAL NOTES FOR DOOR SCHEDULE, CASED OPENING SCHEDULE, ROOM FINISH SCHEDULE, WINDOW SCHEDULE, MECHANICAL SCHEDULE AND ACQUISITION SCHEDULE.
20. REFER TO SUBMITTALS FOR ALL TYPES OF DOCUMENTATION. GENERAL NOTES FOR DOOR SCHEDULE, CASED OPENING SCHEDULE, ROOM FINISH SCHEDULE, WINDOW SCHEDULE, MECHANICAL SCHEDULE AND ACQUISITION SCHEDULE.
21. REFER TO SUBMITTALS FOR ALL TYPES OF DOCUMENTATION. GENERAL NOTES FOR DOOR SCHEDULE, CASED OPENING SCHEDULE, ROOM FINISH SCHEDULE, WINDOW SCHEDULE, MECHANICAL SCHEDULE AND ACQUISITION SCHEDULE.

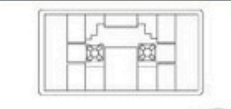
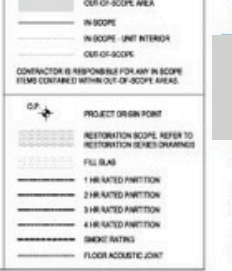
KEYED NOTES

- 10. BY DIA TRASH CHUTE. REFER TO ARCHITECTURAL TYPICAL BASE DETAILS.
- 11. WASTE BIN WITH 3-PHASE POWER. REFER TO ARCHITECTURAL TYPICAL BASE DETAILS.
- 12. CONCRETE FILL. REFER TO ARCHITECTURAL TYPICAL BASE DETAILS.
- 13. CONCRETE FILL. REFER TO ARCHITECTURAL TYPICAL BASE DETAILS.
- 14. CONCRETE FILL. REFER TO ARCHITECTURAL TYPICAL BASE DETAILS.
- 15. CONCRETE FILL. REFER TO ARCHITECTURAL TYPICAL BASE DETAILS.
- 16. CONCRETE FILL. REFER TO ARCHITECTURAL TYPICAL BASE DETAILS.
- 17. CONCRETE FILL. REFER TO ARCHITECTURAL TYPICAL BASE DETAILS.
- 18. CONCRETE FILL. REFER TO ARCHITECTURAL TYPICAL BASE DETAILS.
- 19. CONCRETE FILL. REFER TO ARCHITECTURAL TYPICAL BASE DETAILS.
- 20. CONCRETE FILL. REFER TO ARCHITECTURAL TYPICAL BASE DETAILS.
- 21. CONCRETE FILL. REFER TO ARCHITECTURAL TYPICAL BASE DETAILS.
- 22. CONCRETE FILL. REFER TO ARCHITECTURAL TYPICAL BASE DETAILS.
- 23. CONCRETE FILL. REFER TO ARCHITECTURAL TYPICAL BASE DETAILS.
- 24. CONCRETE FILL. REFER TO ARCHITECTURAL TYPICAL BASE DETAILS.
- 25. CONCRETE FILL. REFER TO ARCHITECTURAL TYPICAL BASE DETAILS.
- 26. CONCRETE FILL. REFER TO ARCHITECTURAL TYPICAL BASE DETAILS.
- 27. CONCRETE FILL. REFER TO ARCHITECTURAL TYPICAL BASE DETAILS.
- 28. CONCRETE FILL. REFER TO ARCHITECTURAL TYPICAL BASE DETAILS.
- 29. CONCRETE FILL. REFER TO ARCHITECTURAL TYPICAL BASE DETAILS.
- 30. CONCRETE FILL. REFER TO ARCHITECTURAL TYPICAL BASE DETAILS.

HOTEL PARTITION NOTES

1. CORRIDOR PARTITIONS TO BE TYPE B1 ACCORDING TO TYPICAL BASE DETAILS.
2. CORRIDOR PARTITIONS TO BE TYPE B1 ACCORDING TO TYPICAL BASE DETAILS.
3. CORRIDOR PARTITIONS TO BE TYPE B1 ACCORDING TO TYPICAL BASE DETAILS.
4. CORRIDOR PARTITIONS TO BE TYPE B1 ACCORDING TO TYPICAL BASE DETAILS.
5. CORRIDOR PARTITIONS TO BE TYPE B1 ACCORDING TO TYPICAL BASE DETAILS.
6. CORRIDOR PARTITIONS TO BE TYPE B1 ACCORDING TO TYPICAL BASE DETAILS.
7. CORRIDOR PARTITIONS TO BE TYPE B1 ACCORDING TO TYPICAL BASE DETAILS.
8. CORRIDOR PARTITIONS TO BE TYPE B1 ACCORDING TO TYPICAL BASE DETAILS.
9. CORRIDOR PARTITIONS TO BE TYPE B1 ACCORDING TO TYPICAL BASE DETAILS.
10. CORRIDOR PARTITIONS TO BE TYPE B1 ACCORDING TO TYPICAL BASE DETAILS.
11. CORRIDOR PARTITIONS TO BE TYPE B1 ACCORDING TO TYPICAL BASE DETAILS.
12. CORRIDOR PARTITIONS TO BE TYPE B1 ACCORDING TO TYPICAL BASE DETAILS.
13. CORRIDOR PARTITIONS TO BE TYPE B1 ACCORDING TO TYPICAL BASE DETAILS.
14. CORRIDOR PARTITIONS TO BE TYPE B1 ACCORDING TO TYPICAL BASE DETAILS.
15. CORRIDOR PARTITIONS TO BE TYPE B1 ACCORDING TO TYPICAL BASE DETAILS.
16. CORRIDOR PARTITIONS TO BE TYPE B1 ACCORDING TO TYPICAL BASE DETAILS.
17. CORRIDOR PARTITIONS TO BE TYPE B1 ACCORDING TO TYPICAL BASE DETAILS.
18. CORRIDOR PARTITIONS TO BE TYPE B1 ACCORDING TO TYPICAL BASE DETAILS.
19. CORRIDOR PARTITIONS TO BE TYPE B1 ACCORDING TO TYPICAL BASE DETAILS.
20. CORRIDOR PARTITIONS TO BE TYPE B1 ACCORDING TO TYPICAL BASE DETAILS.

LEGEND

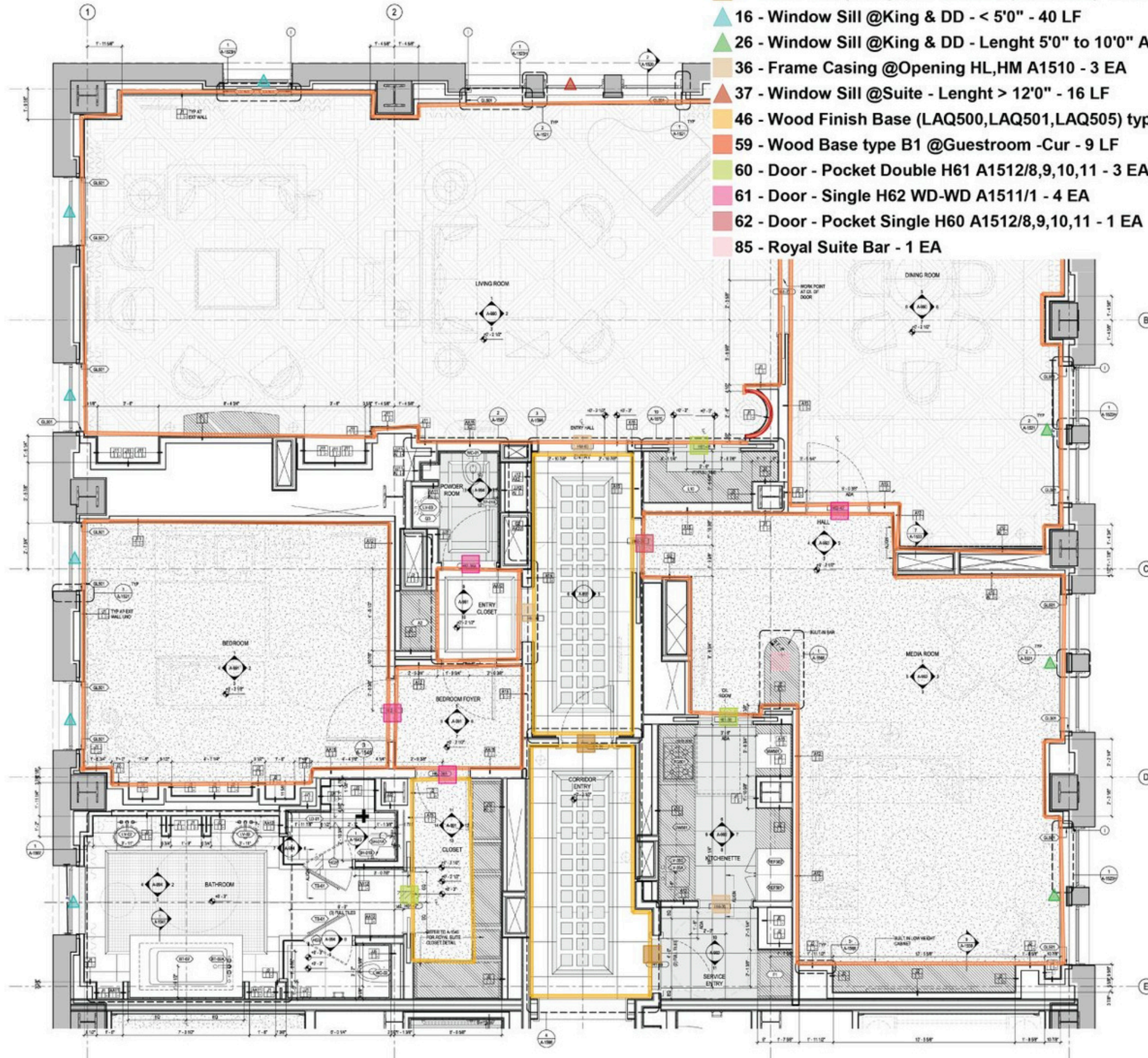


LEVEL	UNIT NUMBER	ADAC	ROYAL SUITE	CEILING / ATYPICAL NOTE
LEVEL 10	1019	ADAC	PROVIDE FIRE ALARM WITH STRIP AT BED & BATH ROOM LIGHT AT BATHROOM	

PLAN NOTES
 1. FOR ARCHITECTURAL DIMENSIONS, REFER TO DWG. 10000.1 & 10000.2.
 2. ALL DIMENSIONS ARE IN FEET AND INCHES.
 3. UNLESS NOTED OTHERWISE, ALL DIMENSIONS ARE TO FACE.
 4. ALL DIMENSIONS ARE TO FACE UNLESS NOTED OTHERWISE.
 5. ALL DIMENSIONS ARE TO FACE UNLESS NOTED OTHERWISE.
 6. ALL DIMENSIONS ARE TO FACE UNLESS NOTED OTHERWISE.
 7. ALL DIMENSIONS ARE TO FACE UNLESS NOTED OTHERWISE.

WALDORF
ASTORIA

- 2 - Wood Base type B1 @Guestroom - A1518/1 - 455 LF
- 7 - Door - Entry Single H1 WD-WD (EXCLUDE) - 2 EA
- 16 - Window Sill @King & DD - < 5'0" - 40 LF
- 26 - Window Sill @King & DD - Length 5'0" to 10'0" A946/1 - 30 LF
- 36 - Frame Casing @Opening HL, HM A1510 - 3 EA
- 37 - Window Sill @Suite - Length > 12'0" - 16 LF
- 46 - Wood Finish Base (LAQ500, LAQ501, LAQ505) type B1 @Guestroom
- 59 - Wood Base type B1 @Guestroom - Cur - 9 LF
- 60 - Door - Pocket Double H61 A1512/8,9,10,11 - 3 EA
- 61 - Door - Single H62 WD-WD A1511/1 - 4 EA
- 62 - Door - Pocket Single H60 A1512/8,9,10,11 - 1 EA
- 85 - Royal Suite Bar - 1 EA



SYMBOL LEGEND

(Symbol)	WALL MOUNTED FEATURE
(Symbol)	RECESSED DOWNLIGHT
(Symbol)	CEILING MOUNTED ACCENT FEATURE
(Symbol)	CEILING MOUNTED FEATURE, PENDANT
(Symbol)	TRUCKER HANGING, TOP
(Symbol)	SCENE LIGHTING FEATURE
(Symbol)	WALL MOUNTED PICTURE LIGHT
(Symbol)	MIRROR LIGHT
(Symbol)	LINEAR LIGHTING FEATURE
(Symbol)	CEILING MOUNTED EXIT SIGN
(Symbol)	WALL MOUNTED EXIT SIGN
(Symbol)	OCCUPANCY SENSOR
(Symbol)	SMOKE & CARBON MONOXIDE DETECTOR
(Symbol)	SPEAKER HEAD
(Symbol)	SPEAKER HEAD, EXTERNAL
(Symbol)	VAV RETURN DIFFUSER
(Symbol)	VAV SUPPLY DIFFUSER
(Symbol)	CCV CAMERA
(Symbol)	WALL MOUNTED FIRE ALARM OPERATOR
(Symbol)	WALL MOUNTED FIRE ALARM OPERATOR WITH STROKE
(Symbol)	WALL MOUNTED STROBE LIGHT
(Symbol)	WALL MOUNTED STROBE LIGHT WITH LOCATION & GO CARBON MONOXIDE
(Symbol)	WALL MOUNTED POINT
(Symbol)	SPEAKER
(Symbol)	VOLUME CONTROLLER
(Symbol)	LOW VOLTAGE SWITCH AND DIMMER CONTROLLER
(Symbol)	THERMOSTAT
(Symbol)	THERMOSTAT SENSOR
(Symbol)	HEAT DETECTOR
(Symbol)	CHIME
(Symbol)	DOOR BELL
(Symbol)	VAV LINEAR DIFFUSER
(Symbol)	VAV LINEAR DIFFUSER, CONCEALED
(Symbol)	CEILING MOUNTED TANGENT CHAIR
(Symbol)	MEDIA RIB, EDGE, CATALIX, HORN, BLUEFOOT, SUPPLY
(Symbol)	MEDIA RIB, FLOOR
(Symbol)	TYPE MEDIA RIB, SEE TYPE PACKAGE FOR LOCATION
(Symbol)	TOUCH-PANEL, TABLE TOP
(Symbol)	TOUCH-PANEL, WALL MOUNTED
(Symbol)	FIRE EXTINGUISHER

POWER AND DATA LEGEND

(Symbol)	SINGLE COMPONENT RECEPTACLE
(Symbol)	WALL MOUNTED DUPLEX RECEPTACLE
(Symbol)	WALL MOUNTED DUPLEX OUTLET RECEPTACLE, OBSOLETE TO APPLIANCE EQUIPMENT
(Symbol)	WALL MOUNTED DUPLEX OUTLET RECEPTACLE, OBSOLETE TO LIGHTING
(Symbol)	WALL MOUNTED DUPLEX OUTLET RECEPTACLE WITH GROUND FAULT INTERRUPTER
(Symbol)	DUPLEX COMPONENT RECEPTACLE, ABOVE COUNTER
(Symbol)	DUPLEX COMPONENT RECEPTACLE, ABOVE COUNTER, GROUND FAULT INTERRUPTER
(Symbol)	DUPLEX COMPONENT RECEPTACLE WITH USB, ABOVE COUNTER, GROUND FAULT INTERRUPTER
(Symbol)	WALL MOUNTED DOUBLE DUPLEX RECEPTACLE
(Symbol)	FLOOR MOUNTED DUPLEX RECEPTACLE, OBSOLETE TO LIGHTING, TYPICALLY LOCATED BELOW FIRE RISK
(Symbol)	SWITCH LOCK RECEPTACLE
(Symbol)	WALL SWITCH
(Symbol)	WALL SWITCH, THREE WAY
(Symbol)	WALL SWITCH, DOOR CONTACT
(Symbol)	TELEPHONE OUTLET
(Symbol)	TEL DATA OUTLET
(Symbol)	TRUCKON MULTIMEDIA OUTLET
(Symbol)	QUICKLINK REFER TO LIGHTING DRAWING FOR MORE INFORMATION
(Symbol)	CONTROL PANEL
(Symbol)	JUNCTION BOX (DOWN LEVEL)
(Symbol)	JUNCTION BOX (UP FLOOR)

1 ENLARGED FLOOR FINISH PLAN - ROYAL SUITE
SCALE: 1/2" = 1'-0"

PROJECT NUMBER
A-929
A-929.00

MARKINGS

TAKEOFF

Takeoff Arranged According to Floors and Units Totals to get a Detailed Breakdown

No.	Name	Height	Quantity 1	UOM1	Quantity 2	UOM2	Quantity 3	UOM3
⊕	Floor 098							
⊕	Floor 099							
⊕	Floor 101							
⊕	Floor 101M							
⊕	Floor 102							
⊕	Floor 103							
⊖	Floor 104							
3	Skimcoat @ Unit Columns - 9'6"	9' 6"	20	LF	192	SF	0	Excluded
16	Blocking @ Handrail	0"	33	LF	0		0	
19	Single Door	0"	4	EA	0		0	
20	Type I4 @ Elevator: 4CH+ins+58+58 : 2HR Shaft - 9'6" NEW	9' 6"	39	LF	0		0	
21	Low Wall at Kitchen	4' 0"	26	LF	0		0	
22	Wood Base @ Coridors	0"	221	LF	0		0	
28	A-400 9'6"	0"	1	EA	0		0	
70	Comerbead - 9'6"	9' 2"	115	EA	0		0	
72	Plywood @ Elec	8' 0"	35	LF	0		0	
80	Install bathroom vanity	0"	13	EA	0		0	
81	Closet rod/shelving	0"	142	LF	27	EA	0	
82	Unit Entry Door	0"	15	EA	0		0	1 Access door/Unit included
83	Single pre hung	0"	26	EA	0		0	
84	Install toilet accessories at units	0"	16	EA	0		0	
85	Double pre hung closet	0"	3	EA	0		0	
86	Tile backer (tubs/showers)	9' 6"	119	LF	0		0	
87	Bathroom premium	9' 6"	162	LF	0		0	
88	Tile backer (kitchens)	9' 6"	155	LF	0		0	
89	Closet Sliding door	0"	10	EA	0		0	